



veda

Sangam Lifespaces Ltd.

Plot R-7, Road No 2, Near Prabhodhan Thakre Ground, Siddharth Nagar, Goregaon (W), Mumbai – 400104

Phone: +91-22-28712801 | [www.sangamlifespaces.com](http://www.sangamlifespaces.com)

Maha RERA Registration No. P51800002383 available at website: <http://maharera.mahaonline.gov.in>.



Established in 1985, Sangam Group has been the face of success in Indian business industry. With well-flourished business in Modern Textile Industry, Steel Manufacturing and Education, Sangam Group has built a solid reputation to sustain. While extending their roots in Indian Infrastructure, Sangam Lifespaces found its existence.

We aim to build an enviable reputation in the real estate market with projects that spell quality. By developing opulent residential and commercial spaces, Sangam Lifespaces has already set a benchmark that we pride to take credit for. In the coming future, Sangam Lifespaces plans to pioneer new consumer-driven industry trends that redefine Indian real estate.

Our flagship projects with top of the line amenities are well located for convenient access to the main business centres across Mumbai. These include Nero at Bandra (E), The Luxor at Goregaon (W), Veda at Andheri (E) and Privé Maison at Prabhadevi. Whatever be the choice you make, you are sure to encounter good living.



# veda

ANDHERI - E

COMFORT . CLASS . CONVENIENCE

Sangam Lifespaces brings you one of its most luxurious projects at Andheri East. The superior class of the project can be judged by the fact that it offers 1, 1.5, 2, 2.5 and 3 BHK homes. It's 3 wings of high rise buildings, satiated with world class infrastructure and amenities, render everything you may need to live a healthy and luxurious life. The project which is in the heart of Andheri East, provides high convenience, connectivity and an array of superb community features like a nearby Jain Mandir, Train station, Metro station, Markets, etc.

ELEGANT EXTRAVAGANCE



ELEGANT ENTRANCE LOBBY



ITALIAN MARBLE FLOORING

COZY PRIVACY



WOODEN FLOORING IN MASTER BEDROOM



PREMIUM BATHROOM FITTINGS

DESIGNER KITCHEN



GERMAN MODULAR KITCHEN

OPULENT COMFORTS



ROOFTOP POOL



ROOFTOP PARTY AREA.



VIDEO DOOR PHONE,  
INTERCOM FACILITY



CCTV & FIRE FIGHTING SYSTEM  
GREEN BUILDING INITIATIVES



ROOFTOP GYM

## AMENITIES



IMPORTED MODULAR  
KITCHEN



SWIMMING  
POOL



RAIN WATER  
HARVESTING



VIDEO DOOR  
PHONE



IMPORTED  
BATH FITTINGS



ITALIAN MARBLE  
FLOORING



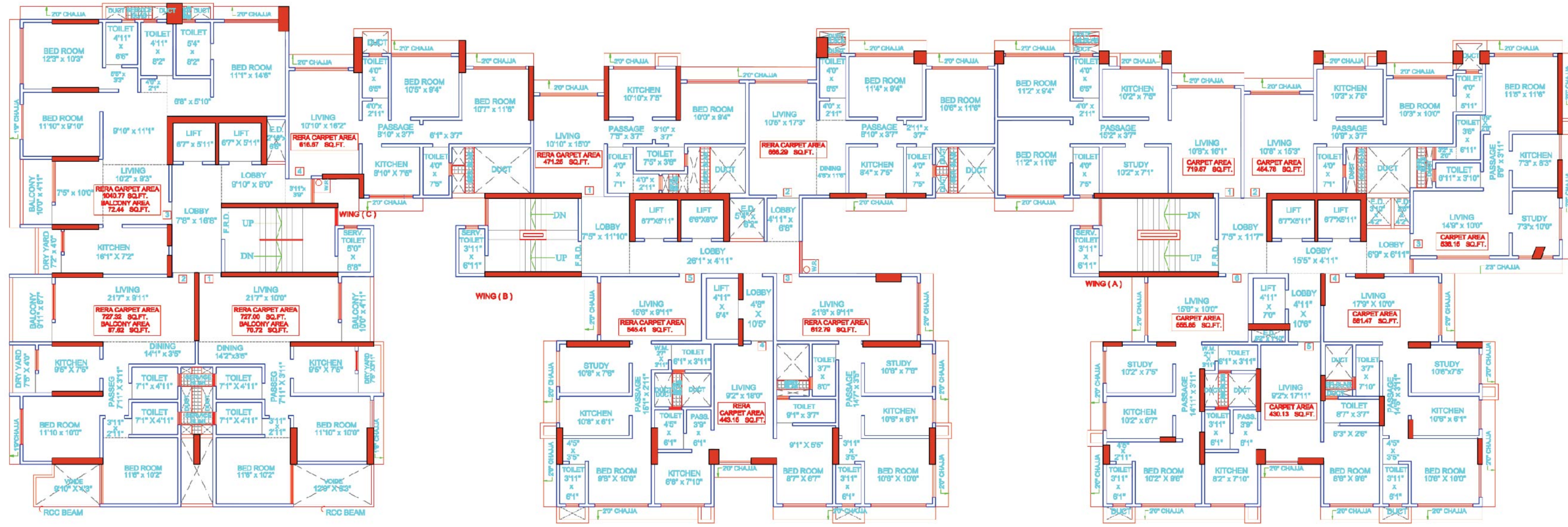
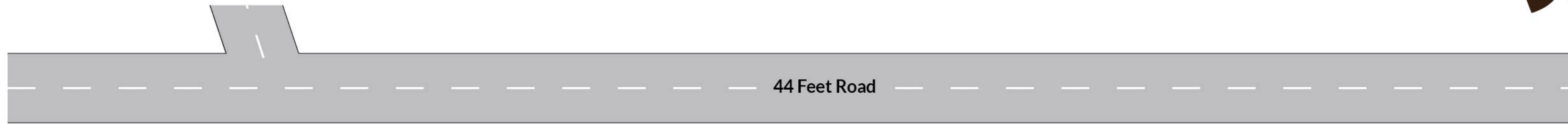
HIGH SPEED  
ELEVATORS



GYMNASIUM



CHILDREN'S  
PLAY AREA



'C' WING

'B' WING

'A' WING

TYPICAL LAYOUT PLAN





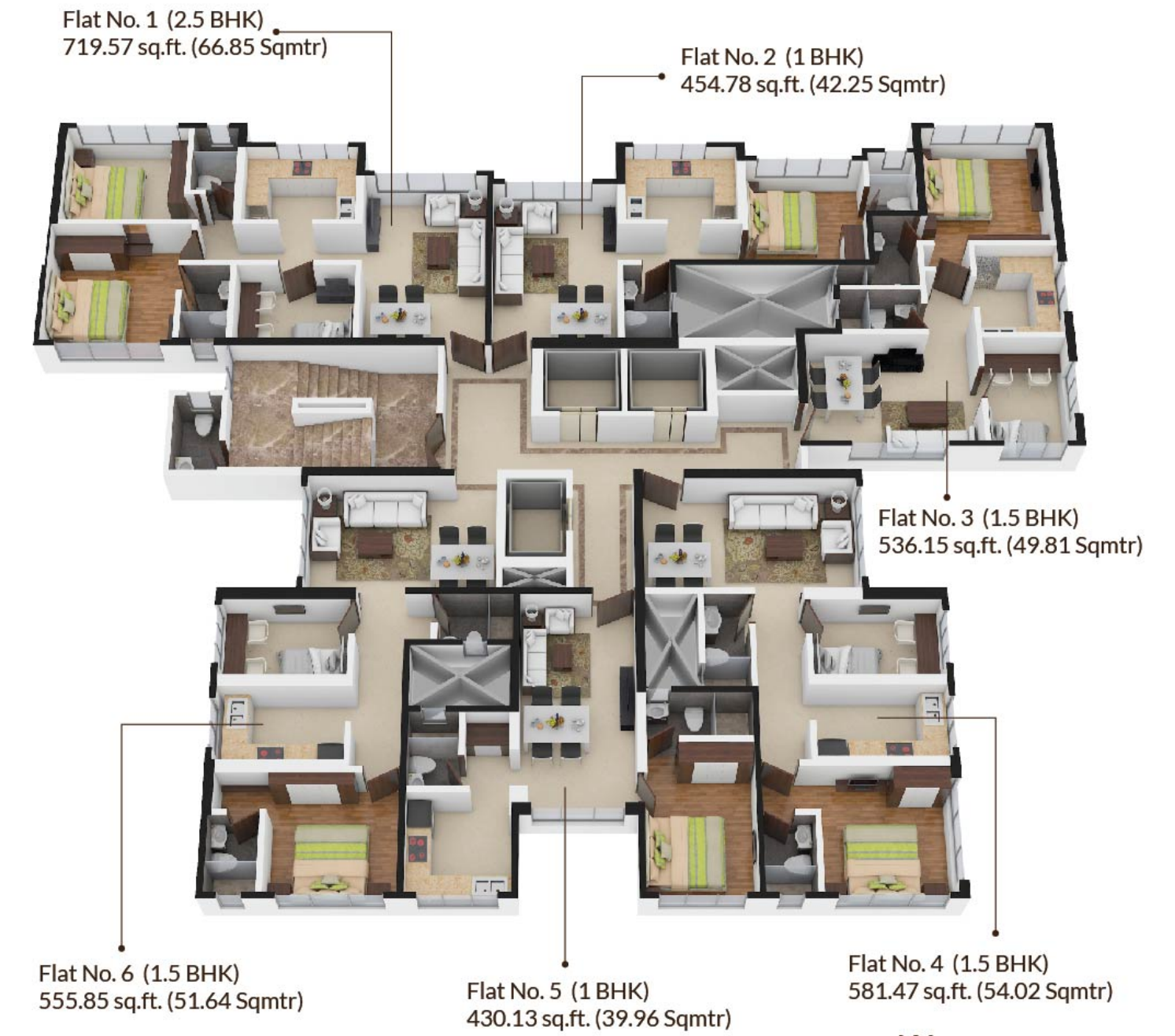
## 'C' WING



## 'B' WING



## 'A' WING



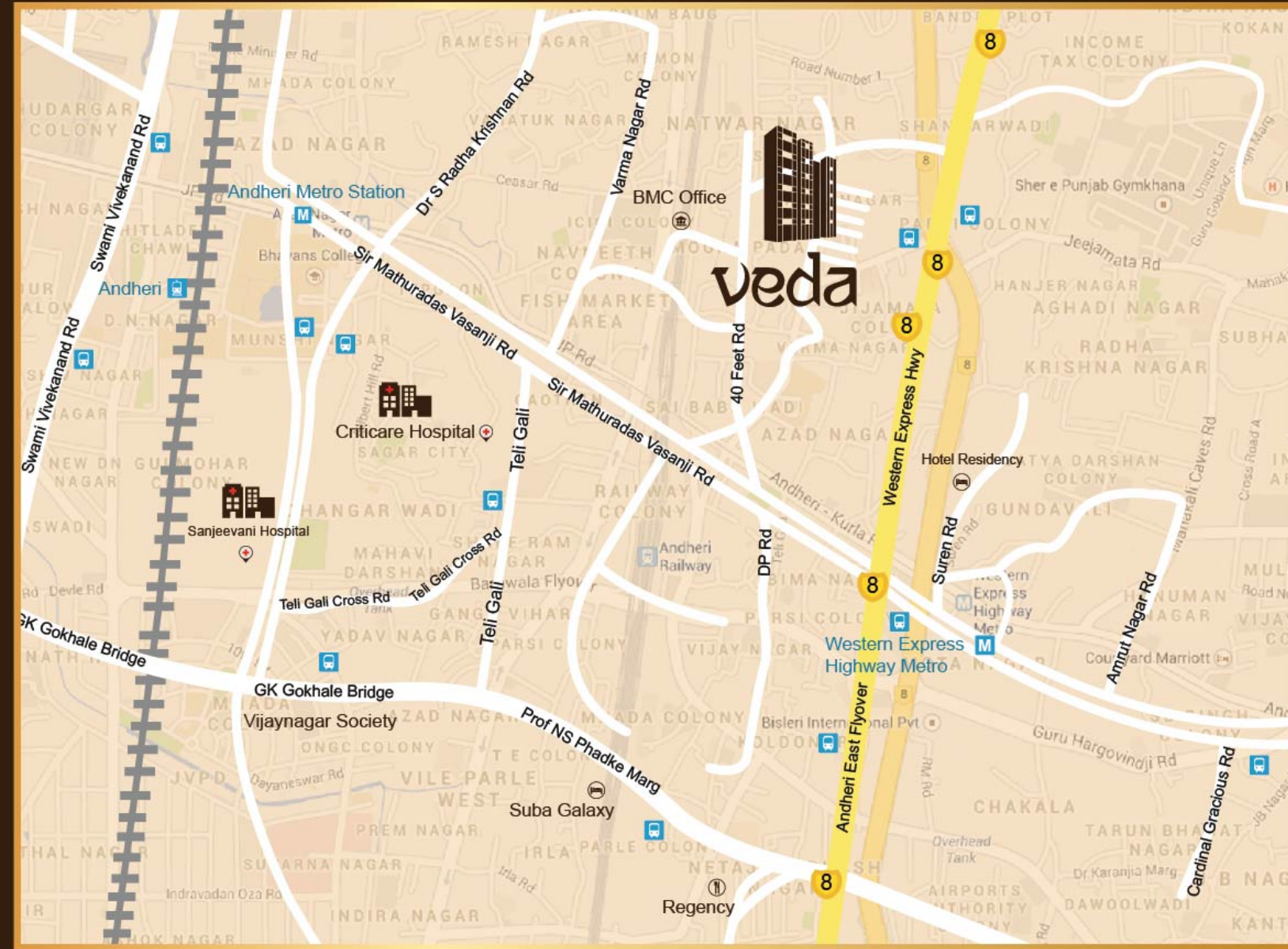
PARTY AREA

GYMNASIUM

POOL



ROOFTOP LAYOUT PLAN



### LOCATION HIGHLIGHTS



Walking Distance to Metro station



Reputed Schools and Colleges in the neighbourhood



4 KM from Chhatrapati Shivaji International Airport



Walking Distance to Western Express highway

Site Address: CTS, 86, 86/1 Omkar Darshan, Gundavali Rahivasi Sangh, SRA CHS, Near Moga Veera Co-Op Bank Andheri East, Mumbai - 400069

## PROJECT PARTNERS



Ananya Developers is an understated yet strong real estate development company. Currently developing projects in Prabhadevi, Bandra, Andheri, Virar, etc. and has over 8,00,000 sq.ft. of space under construction. From its inception in 2007, it has developed over 3,00,000 sq.ft. of space across the metropolis of Mumbai.

Sangam Lifespaces is proud to partner with Ananya Developers for Veda and hopes to jointly deliver not only a beautiful building but also memorable homes to many.



Mr. Unmesh Diwakar Raote, promoter of Srujan Construction, has successfully completed and handed over possession of a 50,000 sq.ft project at Panvel. The company was founded with an objective to share the expertise and experience, to overcome the challenges faced by construction companies in a rapidly changing industry and help them meet their ambitious goals.

The company has a team of motivated, well experienced and qualified civil engineering professionals, with pertinent experience and expertise in Project Management, Execution, Contracts, Quantity Surveying, Estimation and Value Engineering, thus covering the entire aspect of construction management.

Project SPV Shiv Shivam Developers Pvt Ltd.



**THE LUXOR**

ONGOING PROJECT



**NERO**

ONGOING PROJECT



**PRIVÉ  
MAISON**  
COMPLETED PROJECT



  
**SANGAM**  
LIFESPACES



The Design Houzz  
INTERIOR DESIGN STUDIO  
[www.thedesignhouzz.com](http://www.thedesignhouzz.com)

**Design & Laisoning Architect**

Dhaneshwar Pakhare  
(Pakhare & Associates, Bandra) Mumbai

**Project Architect**

Jitendra Mukadam (Unmesh Enterprises Pvt Ltd.  
Architect Division, Dadar) Mumbai

**RCC Consultant**

INTEGRATED BUILDINGS  
Structural & Project Management Consultancy

**MEP Consultant**

Electro-Mech Consultants

**Solicitors**

Girish Godbole

**Contractor**

Faith India Construction Company

Located in heart of Goregaon West (Siddharth Nagar) THE LUXOR has 2,65,000 sq.ft. of residential space with state of the art ultra modern amenities. Just 5 mins drive from Lokhandwala, less than 5 mins from ready to operate Oshiwara Station / East-West flyover & less than 5 minute drive from Inorbit Mall Malad. THE LUXOR has all the elements making it one of the most promising & sought after destination by one & all.

Built over a sprawling 1,00,000 sq.ft., The Nero is strategically located in the connective hub Bandra East. Sharing its neighbourhood with Mumbai's business hotspot BKC (Bandra-Kurla Complex), the multi-storeyed tower looks over the Domestic Airport that falls in the vicinity. Just 5 minutes drive from the Bandra-Worli Sea Link, The Nero has the looks, amenities and personality to compete with BKC's photogenic cityscape.

Privé Maison. That's French for "Private House" Enscocned in the heart of the city, Privé Maison has just 5 Duplex residences, that have a breathtaking view of the Arabian Sea. Plush, ultra modern, luxurious duplex apartments that even the word 'Opulent' would fall short of correctly describing them. Privé Maison. It's Not For Just A Few. But Just Five! Will You Be Among The Five?

The Layout and Building Plans are subject to change as per the discretion of the developer and as approved by B.M.C. and other authorities. All images are for representative purpose only. The Developer reserves their right to make additions, alterations and amendments as they may deem fit from time to time. No right of any nature should be construed from the Brochure.